

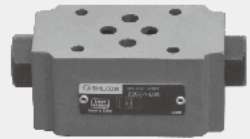


1.10

Check valve pilot operated

Type Z2S 6...L6X

Size 6
Up to 315 bar
Up to 60 L/min



Contents

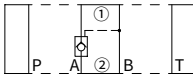
Function and configurations	02
Ordering code	02
Symbols	03
Technical data	03
Characteristic curves	04
Unit dimensions	04

Features

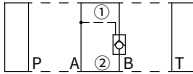
- Sandwich plate valve
- Porting pattern to DIN 24 340 Form A, ISO 4401 and CETOP -RP 121 H
- Leakage-free closure for one or two actuator ports
- For use in sandwich stacking systems
- 3 different opening pressures, optional

Symbols (① = valve side, ② = sub-plate side)

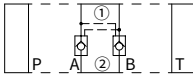
Type: Z2S6A-L6X/..



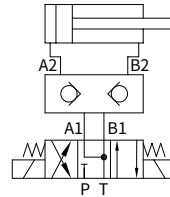
Type: Z2S6B-L6X/..



Type: Z2S6-L6X/..



Circuit example

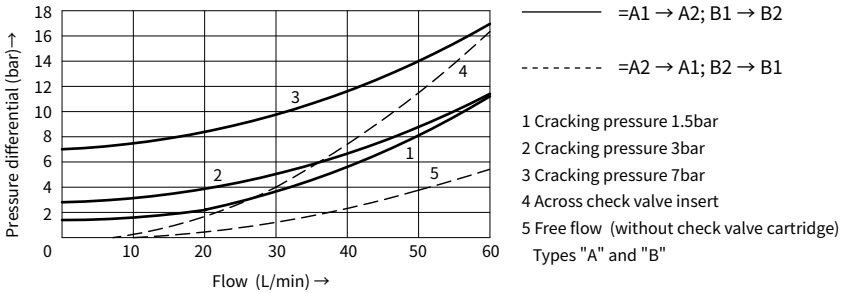


01

Technical data

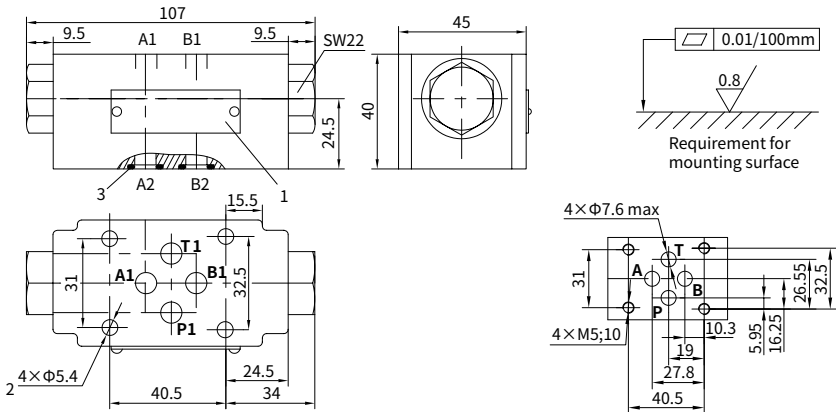
Fluid		Mineral oil suitable for NBR and FKM seal Phosphate ester for FKM seal
Degree of contamination		Maximum permissible degree of fluid contamination: Class 9. NAS 1638 or 20/18/15, ISO4406
Pressure fluid temperature range	°C	-30 to +80 (NBR seal) -20 to +80 (FKM seal)
Viscosity range	mm ² /s	2.8 to 500
Operating pressure	bar	315
Max. flow-rate	L/min	60
Flow direction		See symbols
Flow freely opening pressure	bar	See curves
Ratio of areas		A1/A2=1/3
Weight	kg	Approx. 1.0

Characteristic curves (Measured at $\vartheta_{oil}=40^{\circ}\text{C} \pm 5^{\circ}\text{C}$, using HLP46)



Unit dimensions

(Dimensions in mm)



It must be ordered separately, if connection plate is needed.

Type:

G341/01(G1/4), G341/02(M14×1.5)

G342/01(G3/8), G342/02(M18×1.5)

G502/01(G1/2), G502/02(M22×1.5)

1 Name plate

2 Valve fixing holes

3 O-rings 9.25×1.78 for ports A2, B2, P2, T2